

Crossroads at Leesburg

Quick Facts

Location: 720 South King Street
Leesburg, VA 20175

Project Size: 53 Acres comprising of
approximately
190,000 SF Retail
120,000 SF Office/Medical
40 Residential Homes

Population: 41,173 People 5-Mile Radius

Avg Income: \$89,813 5-Mile Radius

Construction: Delivery Summer 2013

Traffic: 49,000 VPD at Route 7
23,000 VPD at S. King Street

New Growth: In the heart of Virginia's
Fastest growing county

Zoning: B-2 and B-3



To arrange a tour, please call:
Nicholas M. Zuppas or
Peter G. Papantoniou
Phone: 301-961-1941

3 Bethesda Metro Center
Suite 700
Bethesda, MD 20814
www.gzrealty.net

MEDICAL CENTER CONDOS FOR LEASE OR SALE

S. King Street / Davis Avenue Leesburg, VA

MIXED-USE OFFICE, MEDICAL AND RETAIL

Environmentally Friendly in a Prestigious Location with the Conveniences of Office, Retail, Restaurants, Day Care and Residential Homes.



- Located at the Crossroads of the Dulles Greenway, Route 7 & Route 15 Bypass
- Lease or Own your own Suite
- Minutes from Cornwall and Lansdowne Hospital Facilities
- Abundant free surface parking
- Near the heart of Downtown Leesburg

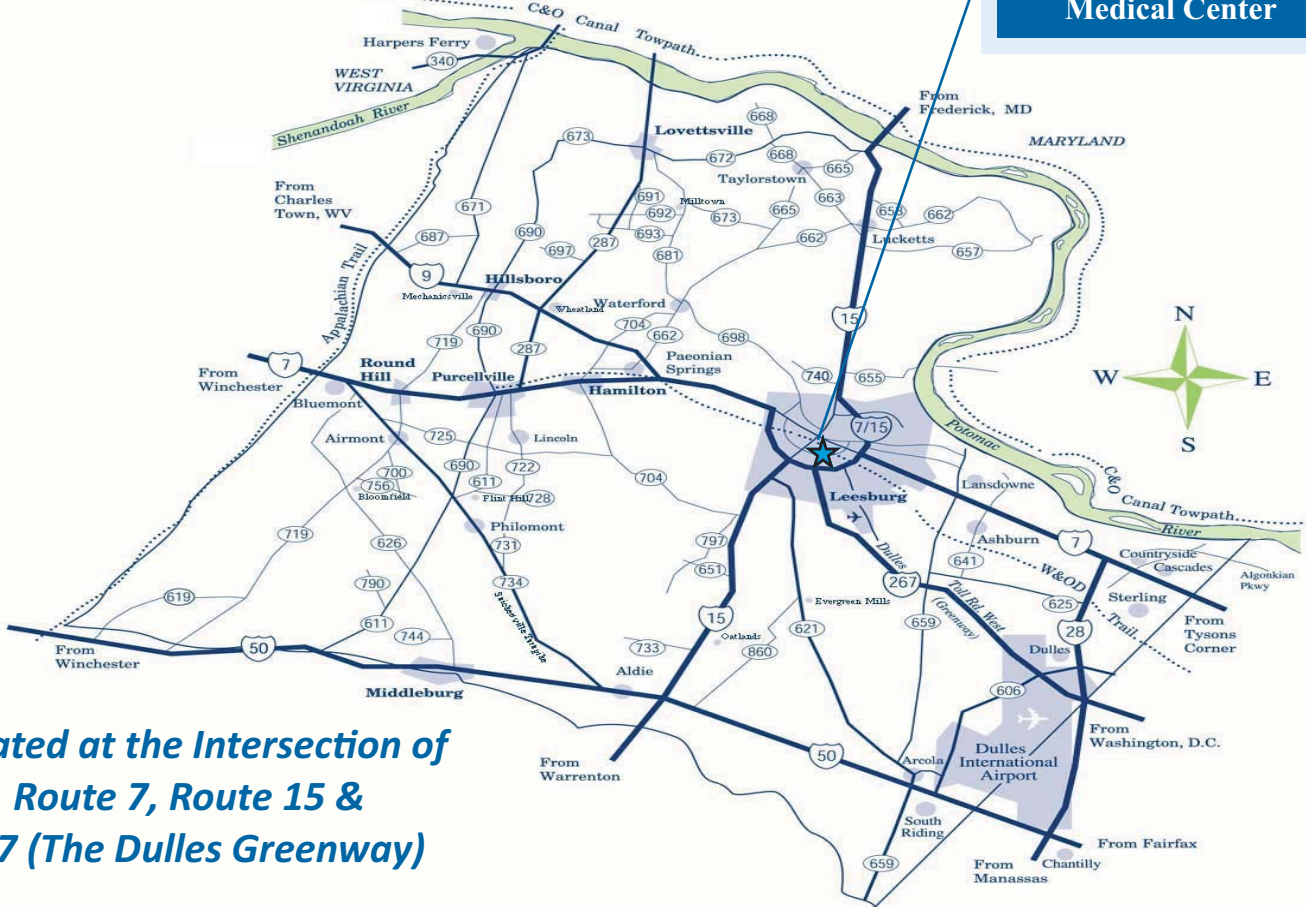
Project Website:

www.CrossroadsatLeesburg.com

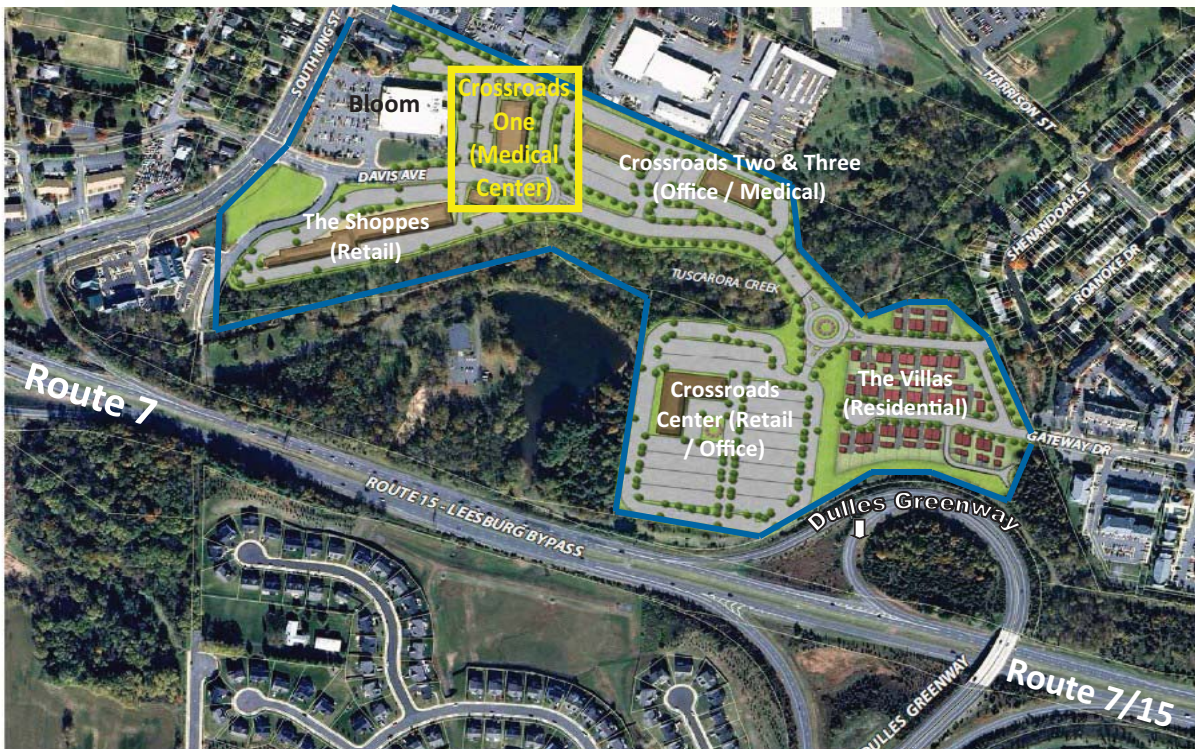
Crossroads at Leesburg

New Regional Mixed-Use project
in the heart of Loudoun County, Virginia

**Crossroads at Leesburg
Medical Center**



**Located at the Intersection of
Route 7, Route 15 &
267 (The Dulles Greenway)**



To arrange a tour
please call:
Nicholas M. Zuppas or
Peter G. Papantoniou
Phone: 301-961-1941

3 Bethesda Metro Center
Suite 700
Bethesda, MD 20814